

Exchange

Autumn 2011

Sharing the skills, knowledge and
experience of working with exhibitions
www.teg.org.uk



Welcome to the Touring Exhibitions Group's *Exchange* publication.

Exchange is published twice yearly to keep TEG members and associates informed about forthcoming events, membership services and resources and the latest additions to our web site, including a list of titles of TEG members' newly available exhibitions for hire. In addition, each issue of *Exchange* features a review or case study to help TEG members to share ideas and practical tips on organising, touring and hosting exhibitions. We are keen to hear from any member who would like to contribute to *Exchange* – please email: judith@teg.org.uk.

Please note that views expressed in articles published in *Exchange* are those of the individual contributor and are not necessarily held by TEG.

Contents

TEG Events: Review of TEG Marketplace 2011, London

TEG Marketplace 2012, Edinburgh, Friday 27 April

New Exhibitions for Hire

Case Study: Jason Williamson, Exhibitions Manager at Aberdeen Art Gallery, writes about hosting *The Lewis Chessmen Unmasked*, a touring exhibition originating from National Museums Scotland and the British Museum's UK Partnership Programme

TEG Online

How to contact TEG

TEG Events

Review: TEG Marketplace 2011

Our 2011 Marketplace was held in April at the British Museum, London. As usual, the Marketplace provided an ideal opportunity for everyone involved in touring exhibitions to get up-to-date with the latest developments in the touring exhibitions sector, catch up on recent developments in display and design, meet exhibition suppliers face-to-face, and network with other exhibitions experts. Delegates also had the opportunity to attend the accompanying seminar on Touring in the New Financial Climate and visit the British Museum's stunning collections and new displays.

The event attracted 110 delegates from organisations throughout Britain and we were also pleased to welcome an exhibitions director from Madrid. Feedback from delegates showed a high level of satisfaction with the networking opportunities, seminar programme and overall format of the day, combined with a general enjoyment of the impressive venue and delicious lunch.

The event was rated good or excellent value for money by 94% of those delegates who responded to our feedback survey. Respondents also provided a range of comments and suggestions to provide food for thought and discussion by the Committee when considering future seminars and the 2012 Marketplace (see below).

Marketplace 2012

National Museum of Scotland
Friday 27 April

TEG is delighted to announce that our Marketplace next year will be hosted by National Museums Scotland at the redeveloped National Museum of Scotland in Chambers Street, Edinburgh, which celebrated re-opening its doors in July. As well as taking advantage of the networking opportunities offered by the TEG Marketplace to discover new touring exhibitions and form partnerships and collaborations, delegates will be able to explore the Museum's exciting new galleries and displays.

The event promises to be a uniquely inspiring day for anyone involved in designing or programming exhibitions, so make sure you reserve the date now. Further details and booking information will be circulated to all TEG members later this year and posted on the TEG web site. The programme will also be included in the spring 2012 issue of *Exchange*.

If you are not already a TEG member but would like to receive details of Marketplace 2012, you can subscribe to our events mailing list at the Contacts page of www.teg.org.uk. uk or alternatively send an email to membership@teg.org.uk with 'Marketplace 2012 Information Request' inserted in the subject line.

For more information about TEG Marketplaces, see www.teg.org.uk/marketplace.

New Exhibitions for Hire

The following new titles have been added to the Exhibitions search at www.teg.org.uk (Resources area) between January and July 2011.

TEG members can view full details and send booking enquiries via the web site. To search for exhibitions listed enter the title or select the organiser's name from the drop-down list on the Exhibitions for Hire webpage.

Aberystwyth Arts Centre

- Michael Huneault: Histoires normales

Association of Illustrators

- Best of British Illustration

Bilston Craft Gallery

- Sensational Clay

Cabaret Mechanical Theatre

- Cabaret Mechanical Theatre presents Automata!

Chenderit School

- Drawing the Line: The Animated Art of Joanna Quinn

Compton Verney

- Quentin Blake: As Large as Life

Crafts Council

- A White, A Blue, A Yellow, Red Poetry by Jeremy Reed
- Block Party: Contemporary Craft Inspired by the Art of the Tailor
- Celebrating 40 Years of Excellence: Recent Acquisitions from the Crafts Council Collection
- Contemporary Textiles from across the Crafts Council Collection
- Lost in Lace: New Approaches by UK and International Artists
- Out of Print: Bookbinding & Letterpress selected by Malcolm Garrett

Craftspace

- Made in the Middle: East Meets West: New Works in Contemporary Craft from the Midlands

Dales Countryside Museum

- Climb Up to the Moor

Derby QUAD

- All That Fits: The Aesthetics of Journalism
- Dinu Li 'Yesterday is History, Tomorrow is Mystery'
- Exposures from the Public Realm
- Ha Ha Road
- Jane & Louise Wilson: Spiteful of Dream
- No Such Place
- Take to the Streets

Expographic

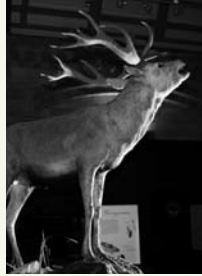
- Tiny

Expositionis Ltd

- Janet Waring – An Anthropology of Kind
- An Artificial Natural History
- The Material Essence of a Poetic Image
- Peter Power: Floral Fashion and Women Designers at the Silver Studio 1910-1940

Fashion & Textile Museum

- Peacocks and Pinstripes – A Snapshot of Masculine Style
- Tommy Nutter: Rebel on the Row



Left to right from top:

The Art of Surfing exhibition, Museum of British Surfing
Grainfoot Farm, Derwentdale, Derbyshire, 1940, Kenneth Rowntree, Recording Britain exhibition, V&A

Maxi Jazz (Faithless), Oil on canvas, Musician Portraits – Joe Simpson exhibition

Dominant Male, **Sexual Nature** exhibition, Natural History Museum

Tommy Nutter, Image courtesy David Nutter, Tommy Nutter: Rebel on the Row exhibition, Fashion & Textile Museum

Michelangelo, Alexis Rago, The Material Essence of a Poetic Image exhibition, Expositionis Ltd

Age of the Dinosaur exhibition, Natural History Museum

Nouveau Bleu Large Platter, Amy Hughes, Blue exhibition, Flow Gallery

Leatherworks Chair – The Campans Brother – Edra, (55) Brazil exhibition, The Civic, Barnsley

New Exhibitions for Hire *continued*

Flow Gallery

- Paperworks
- Blue
- On Repeat

Herbert Art Gallery & Museum

- Secret Egypt: Unravelling Truth from Myth

Joe Simpson, Artist – Contact: Macon Jones

- Musician Portraits – Joe Simpson

Museum of British Surfing

- The Art of Surf

National Craft Gallery of Ireland

- Modern Languages (Re-interpreting the Vernacular)

National Museums Liverpool

- '42' Women of Sierra Leone

Natural History Museum

- Age of the Dinosaur
- Sexual Nature
- Wild Planet

Parker Harris

- Jerwood Painting Fellowships
- Jerwood Makers Open

Pauline Stanley

- Blooming Marvellous – Intergenerational Community Knitted Garden Project

Pop-Up Exhibitions Ltd

- Last Samurai: The True Story

Quilt Art

- Voices

Robert Perry

- 1914-2014

Royal Geographical Society

- Rediscovering African Geographies

Seven Stories, the Centre for Children's Books

- Jacqueline Wilson

The Civic, Barnsley

- (55) BRAZIL

V&A South Kensington

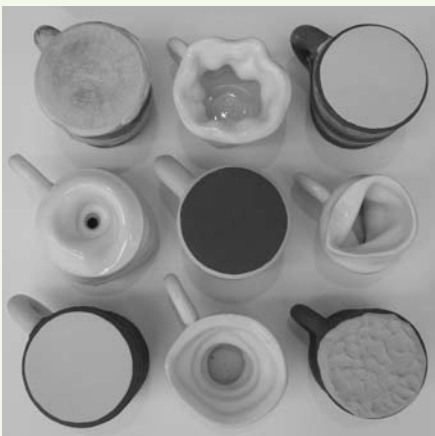
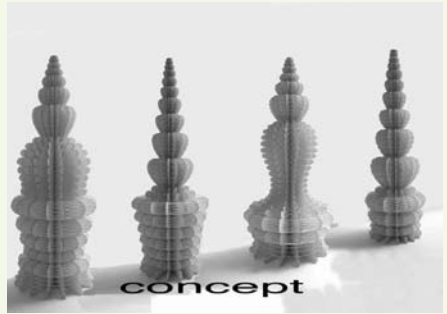
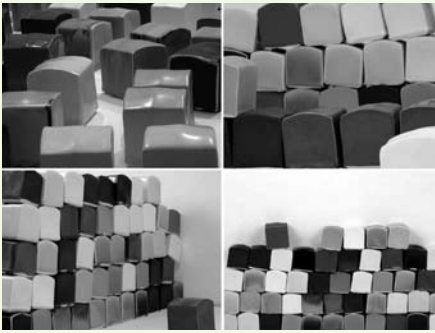
- Japanese Cloisonne
- Recording Britain

Wyllie O Hagan

- First Darkness

Yvonne Hellin-Hobbs

- Thomas Hardy on Stage and Screen



Left to right from top:

Cobblestones, Emmanuel Boos, ceramic, Jerwood Makers Open exhibition, Parker Harris

Michael Huneault: Histoires normales exhibition, Aberystwyth Arts Centre

Knitted Beehive from Blooming Marvellous exhibition, Pauline Stanley

Egg Totem, © Janet Waring, An Anthropology of Kind exhibition, Expositionis Ltd

Ferry Staveman, Paperworks exhibition, Flow Gallery

Set of nine non-functional mugs, **Sensational Clay** exhibition, Bilston Craft Gallery

Peter Ruck, Gerry Images Gallery, Peacocks and Pinstripes exhibition, Fashion & Textile Museum

Exhibition case study

The Lewis Chessmen Unmasked

A touring exhibition originating from National Museums Scotland and the British Museum's UK Partnership Programme shown at Aberdeen Art Gallery, 7 October 2010 – 8 January 2011

By Jason Williamson, Exhibitions Manager, Aberdeen Art Gallery

About the Chessmen

The iconic Lewis Chessmen are one of the most significant archaeological discoveries ever made in Scotland. They were probably carved in Norway, about AD 1150-1200. Crafted from elaborately worked walrus ivory and whales' teeth in the forms of seated kings and queens, mitred bishops, knights on their mounts, standing warders and pawns in the shape of obelisks, they were found in the vicinity of Uig on the Isle of Lewis, in mysterious circumstances. *The Lewis Chessmen Unmasked* touring exhibition featured a number of the Chessmen and supporting objects from the collections of National Museums Scotland and the British Museum, using new research to explore the significance and origins of the pieces.



Planning the venue

The Lewis Chessmen project, which originated from the National Museums of Scotland (NMS) and the British Museum's UK Partnership Programme (BM), resulted in a touring exhibition which reached out to Aberdeen and the Islands of Shetland and Lewis.

Aberdeen Art Gallery & Museums (AAGM) was formally approached by the NMS and the BM to be a host venue for the Lewis Chessmen. This was an opportunity AAGM couldn't say 'no' to and immediately we discussed the request and decided to proceed. Due to the complexity of this tour and geographical spread of the venues, the organisers (NMS and BM) requested a group meeting with representation from London, Edinburgh, Aberdeen, Shetland and Lewis, which to our delight was held in Aberdeen (face-to-face meetings always help before projects get underway).

The organisers were initially keen to use Aberdeen Maritime Museum as our venue for obvious maritime reasons but it soon became apparent that the scale of the exhibition required the use of our flagship



venue which is Aberdeen Art Gallery. The footfall for the visitors reached beyond our expectations and brought in figures of 15,000. Conditions of loan stated a security guard in the exhibition room at all times which gave us the opportunity to count dedicated admissions to this exhibition space.

Meeting the challenges

The request to the host this exhibition came at a time when our special exhibition programme was set, which meant we had to decide to show the Lewis Chessmen in another room on the first floor. The only solution was to remove all works from one of our own permanent collection galleries. These are difficult decisions to make at a time when storage is at a premium and staff availability is already accounted for. Adding on these extra requirements can be a challenge but the shift in work pattern and the ownership of the project spread its wings across the entire staff in our service. The security patrol had to be realigned to take on board the static patrol dedicated to one room and the localised readings of temperature and relative humidity (twice daily).

Another challenge was the practical logistics of hosting this tour. We didn't have any surplus display cases. Fortunately, through the lines of communication within Aberdeen City Council, our Gallery Manager, Christine Rew was able to draw down funds to cover the cost of purchasing new cases. These cases remained with the gallery after the chess pieces moved on and continue to help us display our permanent collection to a high standard. We were able to relocate the display cases downstairs in our back court where our Applied Art Collection is housed.

The other big challenge was to block out the sunlight but bring it back after the tour departed for Shetland. We fixed individual panels of light proof film to each skylight in the room. The room is of Victorian grandeur and has a white curved ceiling which made us retain white as a colour choice for the film. NMS stipulated that the walls were painted a particular grey up to the curve and we have retained this paint colour to this day and may even continue it into adjacent rooms. The NMS designers who led on the overall design were incredibly understanding of each venue's different characteristics and helped us through every detail of the process and installation.

Recording the audience response

As part of the conditions of loan, each venue had to complete 200 surveys and we approached the University of Aberdeen's History of Art Department and developed a student survey rota spanning four selected weeks.

AAGM and Charleston Primary produced *Voices of The Lewis Chessmen* which ran from 3 December 2010 to 8 January 2011. Form P6 of Charleston Primary in Cove, Aberdeen visited *The Lewis Chessmen: Unmasked* in October. They were invited to create short radio dramas inspired by what they saw and their own research. Back at school, they worked with drama artist Fiona Milligan Rennie and sound artist David Goodall to write, perform and record their plays. Visitors were able to enjoy their creative responses to these very famous figures at a listening station adjacent to the display cases and to this day you can download the pod cast at:

<http://aagm.co.uk/Exhibitions/Archive/2010/Voices-of-the-Lewis-Chessmen.aspx>

http://www.nms.ac.uk/our_museums/national_museum/lewis_chessmen_unmasked/voices_of_the_chessmen.aspx

Tour Venues

National Museum of Scotland: 21 May-19 September 2010 www.nms.ac.uk

Aberdeen Art Gallery: 7 October-8 January 2011 www.aagm.co.uk

Shetland Museum and Archives:
21 Jan-27 March 2011
www.shetland-museum.org.uk

Museum nan Eilean, Stornoway:
15 April-12 September 2011
www.cne-siar.gov.uk/museum/stornoway/chessmen.asp





TEG on Wikipedia

The Touring Exhibitions Group now has an article on Wikipedia. It is both a description of what TEG is and what it does and an historical account of how it got there. Please have a look at it if you are at all curious about the development of the organisation. Simply googling 'Touring Exhibitions Group' should give you the option of looking at the Wikipedia article.

If you have any comments, especially if something is missing or if you are left with more questions than answers, please let Mike Sixsmith know, at mike@teg.org.uk.

As you will see, the page counts as a 'new unreviewed article', so please help to make this page permanent by adding your assessment. At the foot of the page, there is a box where Wikipedia asks its readers to rate this article. You can give up to five stars to rate the text in each of the following categories: trustworthy, objectivity, complete and well-written.

Another step to making the page more permanent – to satisfy Wikipedia's criterion of verifiability – is the addition of published references to TEG. If you know of any third-party sources other than those already quoted, please let us know or add these references yourself.

TEG Website

www.teg.org.uk

TEG is making some changes to our website to make it easier to navigate. Note that our online Handbook of Good Practice in Touring will in future be located under a new tab for Publications. We will also be introducing a News tab, where you can find our latest news and members can post their own notices about projects, events job vacancies and opportunities which you would like other TEG members to know about. A list of our supporters (TEG corporate members and sponsors) will be included in the About tab and profiles of corporate members and details of members offering freelance services will continue to be listed under Links.

Comments and suggestions about our web site contents are always welcome and should be sent to our publications manager, Nicola Coleby: nicola.coleby@brighton-hove.gov.uk. If you have any questions about using the web site that are not answered via the Using this Site tab, please email TEG's web site manager, Asako Yokoya: web@teg.org.uk. Members wishing to update their contact details or corporate profiles or freelance members wanting to advertise their services should contact the membership manager, Judith Kelly: membership@teg.org.uk.

How to contact TEG

The Touring Exhibitions Group is an independent membership network of galleries, museums, libraries, art and science centres and other organisations and individuals committed to exchanging exhibitions as a means of sharing ideas, materials and resources. We aim to promote professional standards and consistent practice and to encourage exhibition touring as widely as possible in order to extend public awareness, knowledge and enjoyment of historical and contemporary culture. For full details about TEG membership benefits and to join online, please visit the Membership area of www.teg.org.uk. For a complete list of TEG's Executive Committee members, see the Contacts webpage.

Chair:

Louise Hesketh, Visual Arts Development Officer, The Brindley, High Street, Runcorn WA7 1BG
T: 0151 907 8360 E: Louise.Hesketh@halton.gov.uk

Publications Manager:

Nicola Coleby, Keeper of Exhibitions, Royal Pavilion & Museums, Brighton
T: 01273 292850 E: nicola.coleby@brighton-hove.gov.uk

TEG Secretariat

Office Manager and Handbook Editor: Mike Sixsmith E: mike@teg.org.uk
Membership Manager: Judith Kelly E: membership@teg.org.uk
Website Manager: Asako Yokoya E: web@teg.org.uk



Copyright © Touring Exhibitions Group

All rights reserved. No part of this publication may be reproduced in any form without the prior permission of TEG.

Design www.ninepoint.co.uk

Cover images (left to right from top):

Michael Huneault: Histoires normales exhibition, Aberystwyth Arts Centre

The Lewis Chessmen Unmasked touring exhibition © Mike Davidson/Positive Image

Egg Totem, © Janet Waring, An Anthropology of Kind exhibition, Expositions Ltd

Age of the Dinosaur exhibition, Natural History Museum

Leatherworks Chair – The Campans Brother – Edra, (55) Brazil exhibition, The Civic, Barnsley

Set of nine non-functional mugs, Sensational Clay exhibition, Bilston Craft Gallery

Cobblestones, Emmanuel Boos, ceramic, Jerwood Makers Open exhibition, Parker Harris

Grainfoot Farm, Derwentdale, Derbyshire, 1940, Kenneth Rowntree, Recording Britain exhibition, V&A

Maxi Jazz (Faithless), Oil on canvas, Musician Portraits – Joe Simpson exhibition

TEG online is supported by

PANELOCK

TEG's seminar programme is supported by:

TESSDEMOUNTABLE