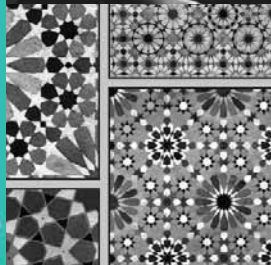


exhibitions exchange autumn 2006
www.teg.org.uk £10



• Touring Exhibitions Group



Exhibition costs

Hire fees exclude VAT. Unless otherwise stated, hirers are responsible for insurance and for providing one-way (normally onward) transport.

Size bands

S – up to 50 metres/150 square metres

M – 50–80 metres/150–350 square metres

L – more than 80 metres/350 square metres.

X is published twice yearly by the Touring Exhibitions Group (TEG) to advertise current touring exhibitions and to foster new collaborations between exhibition organisers and venues. TEG is a membership body open to anyone involved in providing, assisting or showing exhibitions in the UK. It aims to improve the status, provision and standards of all types of exhibitions and advocates touring as widely as possible to promote awareness, knowledge and enjoyment of contemporary and historical culture. Exhibitions listed in X are included in the searchable database in the members' area of TEG's web site, www.teg.org.uk

Cover images (from top)

© Axel Scheffler, 1999, from *The Gruffalo* written by Julia Donaldson (MacMillan Children's Books)
(Exhibition: Frabjous Beasts, Organiser: The Holburne Museum of Art)

Fighting Elephants by Martyn Colbeck
(Exhibition: African Elephants, Organiser: Nature in Art)

Portrait of The Queen by Lord Snowdon
(Exhibition: Elizabeth: Queen & Icon, Organiser: British Postal Museum & Archive)

Handasah: Unity in Pattern by Zarah Hussain
(Exhibition: Handasah, Organiser: SHISHA & Salford Museum & Art Gallery)

Hare Head by Catin Howell
(Exhibition: Llif, Organiser: flow & Oriol Myrddin)

Exhibitions for hire: Newly available

Applied art/craft	3
Contemporary visual art	4
Historical art	6
Design	6
Literature & Illustration	7
Photography	7
Geography	8
Social history	8
Natural History	9
Science	10
Multidisciplinary	10

Exhibitions for hire: Still available

11

Exhibitions ideas

11

How to contact TEG

11

Exhibition organisers included in this issue

12

NOTE: Exhibitions listed in 'X' are the responsibility of individual members and should not be taken as endorsed by the Touring Exhibitions Group. TEG reserves the right to edit exhibition descriptions if necessary.

Exhibitions are grouped according to subject area and listed alphabetically by name of organising institution.

We regret that due to the high demand for entries in this issue, it has not been possible to include all submitted images. TEG members are advised to visit the *Exhibitions for Hire* on the web site (www.teg.org.uk) to see full colour preview images and further details of exhibitions advertised.

Exhibitions for hire Newly available

Subject: Applied art/craft

Bilston Craft Gallery

Contact: Emma Daker
T: 01902 552507 E: bilstoncraftgallery@dsl.pipex.com

Transitions

This exhibition will recognise the challenges sometimes faced by makers at a mid-career point, when they have gained recognition for a particular approach or technique but wish to explore new avenues, philosophies or ideas. It will profile the work of three UK makers from different craft disciplines, providing an opportunity to set new approaches by each in context with their existing catalogue, and explore the issues they face in developing their work.

Hire fee: £1,500 **Size:** 200sqm **Available:** 06.08 onwards

Brunel Broderers

Contact: Christine Harley
T: 0117 970 2734 E: harleychristinej@yahoo.co.uk

Frayed at the Edges

This inspirational new collection of wall-mounted, free-hanging and 3D textile/mixed media pieces, including DVD images, challenges the concepts of Textiles in Art. A candid and incisive voyage beyond the stresses and frays of everyday life. Talks by the artists and interactive projects available.

Hire fee: £750/4 weeks **Size:** S/M **Available:** 01.07 onwards

Catriona Baird

T: 0141 339 5972 E: catriona_baird@yahoo.co.uk

The Cutting Edge, Scotland's Contemporary Crafts

Developed by four museum services (Aberdeen City Council, East Ayrshire Council, Glasgow City Council and National Museums of Scotland) to showcase the very best craft work by Scottish makers. Thirty-one artists are represented, with work in a wide variety of media including glass, silver, textiles, willow, fibre optics and jewellery. To illustrate the title, examples of tools similar to those used to produce the work are included. Interpretative material includes interviews with the makers and a DVD.

Hire fee: £2,500 negotiable **Size:** Flexible
Available: Autumn 2007 & 05.08 onwards

Crafts Council

Contact: Cathy Stafford
T: 0207 806 2515 E: c_stafford@craftscouncil.org.uk

Jerwood Applied Arts Prize 2007: Jewellery

Now approaching its 12th year, this open submission competition runs over a six-year cycle covering the following creative disciplines: metal, jewellery, ceramics, glass, textiles and furniture, with the short-listed artists for 2007 demonstrating the very best of work within the field of jewellery. Work by the short-listed makers will be exhibited at the Jerwood Space, London, from 5 June to 22 July 2007, before touring nationally. The prize will be announced on 25 June 2007.

Hire fee: £4,000 **Size:** 190sqm **Available:** 30.07.07-05.10.07;
17.03.08-23.05.08; 26.05.08-01.08.08

Fibre.Art.Wales

Contact: Bailey Curtis
T: 01531 828664 E: Bailey.C@virgin.net

Making Tracks

The evocative title can be interpreted as the physical evidence of passing marks made by birds, animals, man, transient and ephemeral, washed away by the next tide or more slowly over aeons of time. Making tracks can relate to past, present and future, where we are, have been or want to be. It can be our response to the world, seen and unseen, external and within ourselves. Fibre.Art.Wales' artists have explored these various aspects with their customary vigour and enthusiasm.

Hire fee: Negotiable **Size:** Flexible **Available:** 01.07-01.09

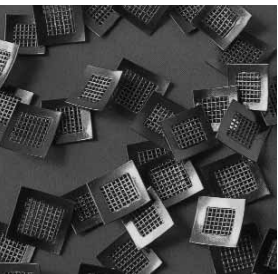
flow and Simone ten Hompel

Contact: Yvonne Demczynska
T: 0207 243 0782 E: info@flowgallery.co.uk

The Everyday

Mundane experiences, prosaic experiences, routine or unusual, experience from any source can put to use, built on and with. The pale-dry summit of a boulder standing proud of a riverbed, ringed with dark wet stone. The spoon that you eat with day after day that measures your life in its daily round from the drawer, to the table, to the bowl to the drawer; and sustains your life in the rhythm of its journeys between the lip of the bowl and the lip of the body.

Hire fee: £1,175 **Size:** S All objects 3D **Available:** 01.07-09.07
(other dates can be discussed)



flow in collaboration with Oriel Myrrdin

(contact details – see previous page)

Lif

Makers from multiple disciplines, who are either specifically or closely associated with Wales. The selection is based upon makers showing particular integrity or originality, who display a tangible feeling for material, and an honesty of vision. A thread of wit in relation to Welshness runs through the selection. Some of the makers playfully subvert the tradition of Welsh craft, keepsakes and culture.

Hire fee: £1,175 **Size:** S Mixture of wall-based and 3D work **Available:** 09.07-05.08



Hare Head
by Catrin Howell

Quilt Art

Contact: Janet Twinn

T: 01737 812136 E: janet@jtwinn.freeserve.co.uk

QA22

New work by this international group of selected textile artists, accompanied by a full-colour book presenting a visual diary of work in progress from initial inspiration to completed piece.

Hire fee: £100/week **Size:** 80-100m **Available:** 10.07-07.09
(some slots already booked)

Sarah Cook

T: 01326 574454 E: judecook@btinternet.com

Bloomin' Marvellous!

The first Warner Textile Archive touring exhibition includes original and digitally reproduced textiles and will demonstrate how the natural environment has inspired and influenced 19th & 20thC textile design. Encompassing modern and vintage designs, including textiles deriving from classical Indian and Chinese designs, the exhibition also includes handling materials making the textiles accessible to the sensory impaired.

Hire fee: tbc **Size:** Flexible **Available:** 10.07 onwards



Big Tulip
© The Warner
Textile Archive

Subject: Contemporary visual art**Bradford Museums, Galleries & Heritage**

Contact: Nilesch Mistry

T: 01274 431212 E: nilesch.mistry@bradford.gov.uk

New Language – New Work by Balraj Khanna

Known for his highly atmospheric paintings in which dream-like shapes inhabit a world uniquely their own, Khanna has extended his repertoire and given his new work a 3D look. Arranged on different levels, these sculptural forms are inter-related and can be put back together as in a big jigsaw puzzle. Painted all-white or in brilliant colours, they leap to life dramatically when lit, creating a new personal language.

Hire fee: £2,000/8 weeks **Size:** 70m wall space **Available:**
Until end 2008

Translucides – Paintings by Margareta Hesse

(Contact: Sonja Kielty, E: sonja.kielty@bradford.gov.uk)

When Margareta Hesse, artist and teacher at the Fachhochschule in Dortmund, Germany, speaks about her pictures, one cannot help feeling as if transposed into a secret laboratory. These are not simply pictures but Translucides (Tran illuminated pictures). Enamel paints meet fluorescent paints, the secretions of Indian scale insects (shellac) are organised into honey-coloured lines, the most synthetic of all conceivable materials, plastic, is given an organic appearance by means of artistic handling.

Hire fee: £2,000/8 weeks **Size:** 70m wall space **Available:**
Until end 2008

Japan Foundation

Contact: Junko Takekawa

T: 0207 436 6695 E: junko.takekawa@jpf.org.uk

Passage to the Future: Art from a New Generation in Japan

In contemporary art, there has been a worldwide tendency for artists to take a greater interest in everyday life and focus on expressing personal perceptions and feelings. This exhibition comprises paintings, sculptures, installations, photographs and video works produced at the start of the 21stC by 11 young Japanese artists who are responding in a similar way. Reflecting their own personality in their art, the works reveal a strong interest in manufacture and allow the viewer to experience the vitality of current Japanese art and debate the meaning of art.

Hire fee: Free **Size:** L Ceiling height 2.8m **Available:** 06.08-03.09

Off-Centre Gallery

Contact: Christine Higgott
T: 0117 978 2647 E: offcentre@lineone.net

Patterns for Pleasure

A colourful and sensuous selection of contemporary patterned and handmade papers for display (most are in frames), including examples from Italy, Japan and South Korea as well as artist's own papers. There are Potato prints, eraser prints, linocuts, woodcuts, marbling and a Japanese process – itajime. Also blocks and other materials for showcase display. Talk and demo offered, by Peter Ford whose work in this form is represented in the V&A's collection.

Hire fee: £350/4-6 weeks **Size:** S **Adaptable Available:** 02.07-2009

Oriel Mostyn Gallery

Contact: Anders Pleass
T: 01492 879201 E: anders@mostyn.org

Bedwyr Williams: Chydig Bach Yn Too Much

The first considered overview of work by this uniquely talented young artist from north Wales. It includes performance, installation, drawing, digital photography and text pieces, with four newly-commissioned works and his two major installations to date, *Tyranny of the Meek* and *Walk a Mile in my Shoes*. Much of his work is performance-based and uses costume, character and stand-up routines, usually autobiographical, to explore themes such as provincial pathos, macho stereotyping and art-world pretentiousness.

Hire fee: £3,000 **Size:** M; 50 sqm floor space min; flexible configuration **Available:** 11.06-05.08

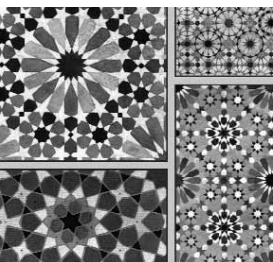
SHISHA (International Agency for South Asian Arts) & Salford Museum & Art Gallery

Contact: Dan Cumberland
T: 07977 139741 E: charlotte.derry@salford.gov.uk

Handasah

An intoxicating fusion of geometric design, spirituality and colour by artist Zarah Hussain. Exploring complex pattern-making methods in the form of paintings and tile panels, Hussain draws inspiration from classical Islamic art. Includes a display of tools that show the traditional processes used for creating authentic hand-made pigments.

Hire fee: £1,000 **Size:** S **Available:** 11.06 onwards



Handasah: Unity in Pattern by Zarah Hussain

Subjects: Contemporary visual art & Archaeology

Peacock Visual Arts

Contact: Nina Eggen
T: 01224 639539 E: nina@peacockvisualarts.co.uk

Awl-love: New work by Stuart Gurden

Centred on a new video film, Awl-love explores the popularisation of Aberdeenshire's many recumbent stone circles, and their 'recuperation' by various, competing interests, whilst also touching on the debate between scientific rationalism and more esoteric ideals. The film is exhibited alongside related new and recent works on paper, two of Stuart's earlier video works, a photograph and cast bronze objects, which use a kind of 'over-wrought realism' to construct a series of diverse portraits.

Hire fee: £500 **Size:** S **Available:** 11.06 onwards

Subjects: Contemporary visual art, Architecture & Literature

Solihull Arts Complex

Contact: Jess Morgan
T: 0121 704 6991 E: jmorgan@solihull.gov.uk

City of the Immortals

Large-scale frameless and wall-mountable images by Birmingham-based artist Michelle Lord. Michelle's work originates from stories and ideas with strong connections to architectural space and results from a continuing fascination with the notion of un-built or fictional environments. The images are a complex hybrid of photography, sculpture, literature, architecture and narrative and involve designing and building theatrical sixth scale sets and hand-crafted models intricately fabricated from card and wood.

Hire fee: £700 (4 weeks minimum) **Size:** S **Available:** 04.07 onwards

Subjects: Contemporary visual art & Social history

V&A

Contact: Lizzie Capon
T: 0207 942 2572 E: touringexhibitions@vam.ac.uk

Uncomfortable Truths

The cross-cultural experience of the trans-Atlantic slave trade has given rise to pronounced creative expressions rooted in past terror, exploitation and survival. Whilst slavery can sometimes be discussed at a remove from contemporary life and its effects abstracted, this exhibition presents works that renegotiate real and stereotyped slave identities and reassess the centrality of slavery's human cost. Includes works by African, British and American artists.

Hire fee: £2,000 **Size:** Flexible **Available:** late-06.07 to early-09.07

Subject: Historical art

Ben Uri Gallery

Contact: Suzanne Lewis
T: 0207 604 3991 E: info@benuri.org.uk

Whitechapel at War: Isaac Rosenberg & his circle

The sixth in the Ben Uri's ongoing series on the Whitechapel Boys, and the first on Rosenberg for more than 15 years, this exhibition features more than 50 paintings, drawings and works on paper, as well as selected manuscripts, photographs and ephemera. Timed to coincide with the publication of Jean Moorcroft Wilson's new biography of the poet-painter Isaac Rosenberg (01 April 2008) and with the 90th anniversary of the end of the First World War, it is the first exhibition to fully explore Rosenberg's art in the context of his Whitechapel peers, including painters David Bomberg and Mark Gertler, and writers John Rodker and Joseph Leftwich.

Fee: £4,000/month plus installation & travel costs **Size:** M
Available: 06.08 onwards

Penlee House Gallery & Museum

Contact: Alison Bevan
T: 01736 363625 E: abevan@penleehouse.org.uk

Dod Procter Retrospective Exhibition

One of Britain's most acclaimed and best-loved painters in her lifetime, in the 35 years since her death, Dod Procter has slipped into relative obscurity. Aged 15, Doris Shaw joined the Forbes art school in Newlyn, where she met her future husband, painter

Ernest Procter. She went on to develop her own unique style, gaining national fame when, in 1927, her painting *Morning* was purchased for the Tate by the Daily Mail. The exhibition will include this work among around 60 examples covering her entire oeuvre.

Hire fee: £4,500 **Size:** M **Available:** 03.08-10.08

Subjects: Design & Social history

British Postal Museum & Archive

Contact: Zoe Lewis
T: 0207 239 5150 E: zoe.lewis@postalheritage.org.uk

Elizabeth: Queen & Icon

In 1967, a sculptor named Arnold Machin produced a portrait of the Queen which was to become one of the most enduring and instantly recognisable designs of the 20thC, printed on over 180 billion stamps and travelling the world as a British design icon. This exhibition will explore the development of Machin's design and document the design process using original photographic portraits, plaster casts and unique artwork by artists and designers such as Dorothy Wilding, Snowdon, John Hedgecoe and David Gentleman.

Hire fee: Venue to meet insurance & transport costs **Size:** S
Available: 09.07 onwards



Portrait of The Queen
by Lord Snowdon

V&A

Contact: Lizzie Capon
T: 0207 942 2572 E: touringexhibitions@vam.ac.uk

Olympic Posters

Planned to coincide with the Beijing Olympics in 2008, and leading up to the London Olympics in 2012, this exhibition illustrates the ideals and changing image of the Games in modern times. Posters are part of the connection between art and culture which was embraced by idealists such as Baron Pierre de Coubertin who revived the Olympic Games in 1896. Their aims included fostering international understanding through sport as much as inspiring excellence in society at large. Through the lens of these posters' four-yearly snapshots, the exhibition explores links between sport and art, and looks at the way different countries choose to project their own national identities.

Hire fee: £5,000 **Size:** Around 500 sqm **Available:** 2008 onwards

Subjects: Literature & Illustration

The Holburne Museum of Art

Contact: Howard Batho
T: 01225 820828 E: h.batho@bath.ac.uk

Frabjous Beasts

Quentin Blake selected a weird and wonderful collection of beasts and monsters by ten of the country's finest living illustrators. He also created five frabjous beasts of his own. Including original drawings of such famous characters as Raymond Briggs' *Fungus the Bogeyman* and Axel Scheffler's *Gruffalo*, the beasts reveal the wonderfully fertile imaginations of their creators and share the power to intrigue or surprise.

Hire fee: On request **Size:** S 27 works mounted in 23 frames

Available: 12.06 onwards



© Axel Scheffler, 1999, from *The Gruffalo* written by Julia Donaldson (Macmillan Children's Books)

Subjects: Literature & Illustration/ Historical art

Graphicus Touring

Contact: Dr Leo John De Freitas
T: 01295 256110 E: leodefraitas@graphicustouring.com

Mad Dog in the Nursery: Illustrations from the children's books of Walter Crane and Randolph Caldecott

Walter Crane (1845-1915) and Randolph Caldecott (1846-1886) are acknowledged as the two founding fathers of the modern children's picture book in Britain, if not the world. A selection (approx 40 images) from their nursery books published in the 1870s-80s is supported with books, musical instruments and large format sing-along panels. Kate Greenaway (1846-1901), always associated with them as illustrators of nursery books, makes a 'guest appearance' (approx 10 images).

Hire fee: £200/week (minimum 3 weeks) **Size:** 20-30m

Available: 04.07 onwards



Elegy on a Mad Dog
by Randolph Caldecott

Subject: Literature

Book Trust

Contact: Sarah MacDougall
T: 0208 516 2988 E: sarah.macdougall@booktrust.org.uk

Jottings and Doodles: A Journey into the Writer's World

Envisioned by current children's laureate Jacqueline Wilson as her laureate legacy, and aimed at a target audience of junior school-aged children and their families, this exhibition about contemporary children's literature aims to unpack the writing process for children, to encourage their own writing and reading and to engage them with these subjects in a new and imaginative way. Comprising books, manuscripts, works on paper and ephemera, it will feature work by up to 16 contemporary writers and 8 contemporary illustrators, covering a diverse range of backgrounds and genres.

Hire fee: tbc **Size:** M Flexible modular system **Available:** 01.08-12.08

Subjects: Photography & Social history

Bethlem Art and History Collections Trust

Contact: J Michael Phillips
T: 0208 776 4307/4227 E: JMichael.Phillips@slam.nhs.uk

Insanity in Focus – Psychiatric patients photographed 150 years ago

Between 1857 and 1859, Regent Street portrait photographer Henry Hering made several visits to Bethlem Royal Hospital, then at St George's Fields, Southwark. He photographed several patients on the general wards as well as in its criminal department. It is likely that he was attempting to document what was then known as the physiognomy of insanity, though no record of his intentions has been kept. Whatever his purpose, the enduring result is a striking record of institutional life in mid-Victorian Britain.

Hire fee: Free **Size:** 20-40 photos mounted on boards each 72 x 50 cm **Available:** 11.06 onwards

Subjects: Photography & Geography/ Social history

Oriel Mostyn Gallery

Contact: Anders Pleass

T: 01492 879201 E: anders@mostyn.org

Neville Gabie: Playing Away UK

Eleven large-scale colour photographs from each of the four home nations celebrate the Euro 2004 football championships by taking a quirky yet affectionate look at the very bottom end of football: the playing fields, yards and streets where a variety of makeshift goalposts signal the places where young (and not so young) people gather for a kickabout. The goalposts Gabie records reflect the nature of the communities in which they are situated, and the exhibition as a whole thus comments implicitly on contemporary British society.

Hire fee: £3,000 **Size:** M **Available:** 11.06-05.07

Royal Geographical Society

Contact: Vandana Patel

T: 0207 591 3052 E: v.patel@rgs.org

Woolf in Ceylon 1904-1911

A look at Ceylon, now known as Sri Lanka, through the eyes of two writers; Leonard Woolf, husband of the celebrated writer Virginia Woolf and Sir Christopher Ondaatje. Woolf worked in Ceylon as a British Administrator from 1904-1911, during which time he published books about his life there. Ondaatje, born in Ceylon almost 100 years later follows in the footsteps of Woolf to gain an insight into both Woolf's life whilst he was there and to chart the social and physical changes within the country.

Hire fee: £1,200 **Size:** M **Available:** 06.06 onwards

Lost Landscapes

The world's surface is a patchwork of varied landforms – from soaring mountain ranges and bustling cities, to tropical forests and rural idylls. Human and natural forces continually combine to bring about fundamental changes to the landscape. This exhibition explores the evolution of landscapes; those that have been lost, changed or been rediscovered and questions what may happen to our landscapes in the future.

Hire fee: £1,200/8-16 weeks **Size:** M 42 prints **Available:** 09.06 onwards

Rural Education and Arts Project

Contact: Julia Cook

T: 01298 83500 E: juliacook@reapweb.org.uk

Personal Expressions: Photographic Images by Young Farmers

Consisting of 45 photographic prints and 2 audio-visual pieces produced by REAP in partnership with members of Derbyshire Federation of Young Farmers' Clubs, this project used photography to consult, energise and support young people living in rural Derbyshire as they addressed the issues, challenges and aspirations that colour their lives. A unique insight into rural life today, exploring many of the issues that affect current and future farming generations.

Hire fee: Free (minimum 6 weeks) **Size:** S; flexible **Available:** 06.07-06.08

Subject: Social history

The Surfing Museum

Contact: Peter Robinson

T: 07887 758324 E: info@thesurfingmuseum.co.uk

British Surfing History

An established, unique and successful exhibition, containing a selection of vintage British surfboards dating from the very latest to those more than 100 years old. It's fun and vibrant, appealing to all, with its unusual and colourful mix of memorabilia, films and photo. Talks and demos available.

Hire fee: £500/month (minimum of 3 months preferred) **Size:** Flexible **Available:** 09.06 onwards

Subjects: Social history & Technology/Science

British Postal Museum & Archive

Contact: Zoe Lewis

T: 0207 239 5150 E: zoe.lewis@postalheritage.org.uk

Moving the Mail: Horses to Horsepower

Traces the fascinating history of road transport in the postal service, featuring rarely-seen vehicles from the BPMA collection together with images from the Royal Mail Archive. 12 panels & 13 postal vehicles illustrate the development of road transport, charting different eras from 'Post Boys and Mailcoaches' to 'Use of Horses', 'Boy Messengers' and the current 'Modern Fleet'.

Hire fee: Free; venues to meet costs of transporting vehicles & panels **Size:** Flexible; can be adapted to suit space **Available:** 03.07 onwards

Brunel: Speeding the Mail

Isambard Kingdom Brunel embodied the engineering genius of the Victorian age and left behind an enduring legacy of technology and architecture. This graphic exhibition celebrates Brunel's role in the birth of mass communication, looking at four major areas: his early career and the Thames Tunnel, The Great Western Railway, The Great Ships and The Clifton Suspension Bridge. Each theme is illustrated with stamp artwork commissioned by Royal Mail from 1969 to the present.

Hire fee: Venue to meet insurance & transport costs **Size:** S **Available:** 01.07 onwards



Brunel, Royal Albert Bridge, 2006

Subjects: Natural history & Applied art

The National Library of Wales

Contact: Jaimie Thomas

T: 01970 632973 E: jaimie.thomas@llgc.org.uk

Of a Feather, by Colin See-Paynton

Exquisite new wood engravings on an avian theme, to coincide with a limited edition book by the Gregynog Press, to be launched in 2007 with a foreword by David Attenborough. Colin See-Paynton is well-known as a distinguished exponent of the art of wood engraving. He is a fellow of the Royal Cambrian Academy, Honorary Fellow of the Royal Society of Printmakers and a member of the Society of Wood Engravers.

Hire fee: £500 **Size:** 40 frames approx 51 x 41cm & related book **Available:** 04.08 onwards

Subjects: Natural history & Photography

Nature in Art

Contact: Simon Trapnell/Pauline Lillico

T: 01452 731422 E: director@nature-in-art.org.uk

African Elephants

Modern sepia and b&w photographs by renowned film-maker and photographer Martyn Colbeck (past winner of Wildlife Photographer of the Year). For the last 20 years, he has travelled the world making films and shooting sequences for some of the BBC Natural History Unit's best known productions, most recently the hugely successful *Planet Earth*. These are powerful and moving images of elephants by someone 'infatuated with the photography of these beasts' who successfully captures 'something of their character – the way they act, the way they live'. Launched by Sir David Attenborough, August 2006.

Hire fee: £1,200/4 weeks; £1,600/6 weeks **Size:** M **Available:** 02.07 onwards



Fighting Elephants
by Martyn Colbeck

Subject: Science

Peterborough Museum

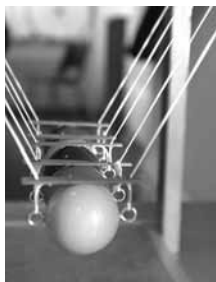
Contact: Karen Selby

T: 01733 343329 E: museum@peterborough.gov.uk

Toys and Forces

A family and schools-focused science exhibition aimed particularly at the 5-9 age group (Key Stage 1 & early Key stage 2). Investigate the forces of the universe through the hands-on exhibits and interactives. Unravel the mysteries of the world using the toys and do-it-yourself activities.

Hire fee: £400/6 weeks **Size:** S (modular; flexible) **Available:** 2007 onwards



Newton's Cradle

Subject: Multidisciplinary

David Nicholls

T: 01304 360981 E: djnicholls@hotmail.com

Cabinets of Curiosities

Two cabinets which question the authority of museum labelling. Containing 111 exhibits between them, they blend truth and fiction into the same display, leading the viewer to speculate as to what is true and what isn't. The eclectic mix of strange objects includes a shrunken head, a three-tailed lizard, a bottle containing a witch, a pocket watch hit by a sniper's bullet and other bizarre, thought-provoking and sometimes humorous specimens (davidjnicholls.co.uk, and go to 'curiosities').

Hire fee: £150 per cabinet or £250 for both **Sizes:** 117x85x16 cm & 172x73x8 cm (open) **Available:** 11.06 onwards

Richard Ellam

T: 01761 412797 E: Richard@lminteractive.eclipse.co.uk

It's A Puzzle

A challenging set of large, stoutly-made, hands-on puzzles, guaranteed to delight audiences of all ages. Universally popular, and has been successful in attracting new, hard-to-reach audiences to venues. The puzzles are satisfyingly large and come on table-top workstations, each with 'challenge' and 'clue' labels. Artwork for supporting graphics can be supplied on CD-ROM.

Hire fee: £175/week (minimum 4 weeks) **Size:** S Flexible **Available:** 11.06 onwards

Friends of Sharmanka/ Sharmanka Kinetic Theatre

Contact: Tatyana Jakovskaya

T: 0141 552 7080 E: sharmanka.kinetic@virgin.net

Sharmanka Travelling Circus

Mysterious, and darkly humorous, Eduard Bersudsky's amazing kinetic sculptures present an eerily magical theatrical performance – whirring, clicking, buzzing and clanking into action to tell their story. Marvel at the mechanics, as a fantastical array of intricately carved wooden creatures, bears, birds, bell-ringers, monkeys, rats and elephants, narrate stories both comic and tragic, about the human spirit and the cycle of life and death.

Hire fee: £3,000 for the first month, then £1,000/month (VAT not charged) **Size:** M; min height 300cm, blackout essential **Available:** 11.06-06.07; autumn 07 onwards

V&A Museum of Childhood

Contact: Esther Jones

T: 0208 983 5200 E: moc@vam.ac.uk

Lost in Space

Space toys and childhood material which explores people's age-old fascination with space and its influence on popular culture and imagination, especially during the last century. This influence can be seen in literature, design and film, which in turn has had an impact on the toy industry. Featuring toys, merchandise, literature and artwork, together with other childhood and real space material, the exhibition considers the enduring relationship between reality and fantasy.

Hire fee: tbc **Size:** M **Available:** 07.08-07.10

Exhibitions for hire: Still Available

The following exhibitions have been included in a previous issue of X. TEG members can view full details of each exhibition at www.teg.org.uk.

Craftspace (www.craftspace-touring.co.uk)

Making Links

Self-portraits using jewellery and photographs created by 10 retired men and women of Afro-Caribbean origin.

Oriel Davies Gallery (www.orieldavies.org)

Comfort Zones

Features contemporary art that is both constructed around and created within the domestic environment.

Available: End-05.07-05.09

Scottish Mask & Puppet Centre

(www.scottishmaskandpuppetcentre.co.uk)

The Magic of Masks & Puppets

Behind the Mask

V&A (E: touringexhibitions@vam.ac.uk)

Contemporary Photography: Recent Acquisitions from the V&A

A selection that reflects some of the best in international photography since the mid-90s, including both internationally well-known names and emerging talents. Slots available in 2008.

Where Are We? Questions of Landscape

A cross-section of classic and contemporary photographers and their responses to the land. Slots available in 2008.

Seeing Things

A broad spectrum of photographic creativity: 120 works – famous, anonymous, accidental and new – by 90 photographers using 25 different photographic techniques. Slots available in 2009.

Domestic Idylls: Clementina, Lady Hawarden

An enchanting selection of Victorian photographs from one of the pioneering women of photography. Slots available in 2007.

Exhibition Ideas

Royal Geographical Society

Contact: Vandana Patel

T: 0207 591 3052 E: v.patel@rgs.org

The RGS would like to hear from organisations that are interested in principle in hosting any of four touring exhibitions produced as part of the Society's three-year education and heritage project, entitled *Crossing Continents: Connecting Communities*. The project will develop partnerships with the Muslim, African, Chinese and Sikh communities by using extensive RGS collections of photographs, maps, books, journals and archive materials to explore the diverse geographical and historical roots of our society.

Muslim: Focusing on a collection of photographs of Kandahar in Afghanistan from 1880; the exhibition is being developed in association with London based Afghani groups and an Islamic boys school. Proposed dates: from Feb 07

African: Focusing on the Society's East African materials.

Community groups and supplementary school partners to take part in workshops in spring 2007. Proposed dates: from Nov 07

Chinese: Workshops to develop the exhibition will start autumn 2007. Proposed dates: from Aug 08

Sikh: Workshops start autumn 07. Proposed dates: from Nov 08

How to contact TEG

For a complete list of TEG's Executive Committee members, see Contacts at www.teg.org.uk.

Chair: Sarah Champion, Chinese Arts Centre

T: 0161 832 7271 E: ceo@chinese-arts-centre.org

Vice Chair: Andy Horn, Craftspace Touring

T: 0121 608 6227 E: a.horn@craftspace-touring.co.uk

Publications Manager ('X'):

Gwenllian Ashley, Ceredigion Museum

T: 01970 633086 E: gashley@ceredigion.gov.uk

Membership manager: Judith Kelly

T: 029 2030 4923 E: JudithWKelly@ntlworld.com

Entries for Exhibitions Exchange

Spring 2007

Please complete the entry form at Exhibitions for Hire, www.teg.org.uk by 16 March.

Exhibition organisers included in this issue

Ben Uri Gallery

108A Boundary Road, London NW8 0RH

Bethlem Royal Hospital Archives & Museum

Monks Orchard Road, Beckenham BR3 3BX

Bilston Craft Gallery

Mount Pleasant, Bilston WV14 7LU

Book Trust

45 East Hill, London SW18 2QZ

Bradford Museums, Galleries & Heritage

Cartwright Hall, Lister Park, Bradford BD9 4NS

British Postal Museum & Archive

Freeling House, Phoenix Place, London WC1X 0DL

Brunel Broderers

8 Manor Grove, Mangotsfield, Bristol BS16 9LF

Catriona Baird

Glasgow

Crafts Council

44a Pentonville Road, London N1 9BY

David Nicholls

159 Beach Street, Deal, Kent CT14 6LD

Fibre.Art.Wales

7 Lancaster Terrace, Hill Top Lane, Newent, Glos GL18 1EA

flow

1-5 Needham Road, Notting Hill Gate, London W11 2RP

Friends of Sharmanka

64 Osborne Street, Glasgow G15 5QH

Graphicus Touring

36 Bloxham Road, Banbury, Oxon OX16 9JN

Holburne Museum of Art

Great Pulteney Street, Bath BA2 4DB

Japan Foundation

Russell Square House, 10-12 Russell Square, London WC1B 5EH

National Library of Wales

Aberystwyth SY23 3BU

Nature in Art

Wallsworth Hall, Twigworth, Gloucester GL2 9PA

Off-Centre Gallery

13 Cotswold Road, Bristol BS3 4NX

Oriel Mostyn Gallery

12 Heol Vaughan, Llandudno, Conwy LL30 1AB

Peacock Visual Arts

21 Castle Street, Aberdeen AB11 5BQ

Penlee House Gallery & Museum

Morrab Road, Penzance, Cornwall TR18 4HE

Peterborough Museum

Priestgate, Peterborough PE1 1LF

Quilt Art

Woodfield, 11a Tower Road, Tadworth, Surrey KT20 5QY

Richard Ellam

3 Winterfield Road, Paulton, Bristol BS39 7RF

Royal Geographical Society with IBG

1 Kensington Gore, London SW7 2AR

Rural Education and Arts Project

Corner Office, Bank House, Market Place, Longnor, Buxton SK17 0NE

Salford Museum & Art Gallery

Peel Park, The Crescent, Salford M5 4WU

Sarah Cook

Seekers Cottage, 3 Crelly Row, Crelly, Helston, Cornwall TR13 0EZ

Solihull Arts Complex

Homer Road, Solihull B91 3RG

The Surfing Museum

Seaside Cottage, 69 St George's Road, Brighton BN2 1EF

V&A

Cromwell Road, South Kensington, London SW7 2RL

V&A Museum of Childhood

Cambridge Heath Road, London E2 9PA